

## Life in Hampton Roads 2021 – Education & Public Schools

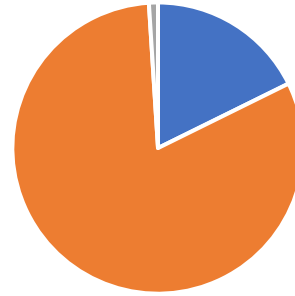
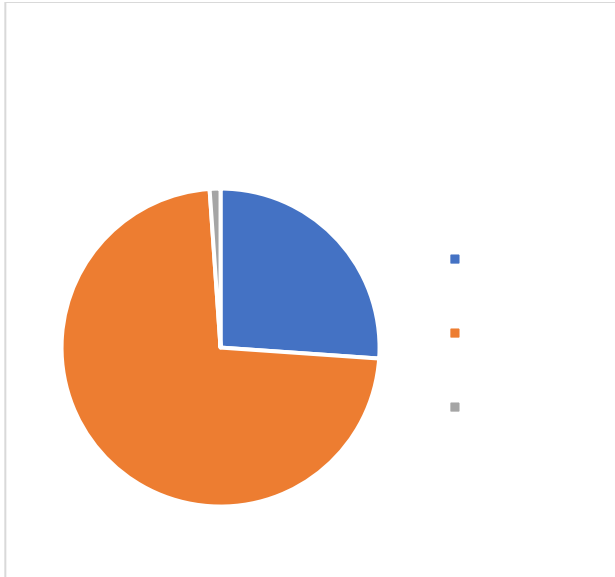
### Introduction

The Social Science Research Center (SSRC) at Old Dominion University recently completed data collection for the 12th annual Life in Hampton Roads (LIHR) survey. The purpose of the survey is to gain insight into residents' perceptions of the Ó fe

between July 12 and Oct. 3, 2021. It is important to note that the methodology this year differs from previous Life in Hampton Roads surveys. For several reasons, including continued concerns about COVID-19 and labor shortages, we conducted both telephone surveys and online panels. This change limits to some degree the ability to compare this year's results with those from previous years or to confidently generalize the results to the Hampton Roads population as a whole. Nonetheless, we note that an increasing number of surveys have moved online in recent years, and that in many instances useful data has been developed despite the challenges of online survey research. For more detailed information on the methodological changes and potential impacts please see the Methodology section in the full report, or please contact the SSRC directly.

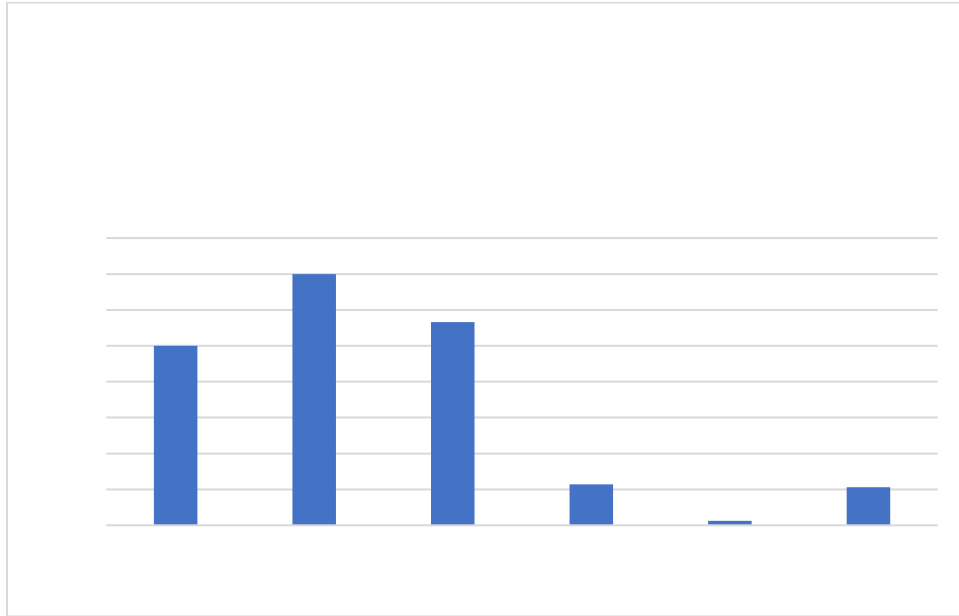
### Education & Public Schools

About one in four (26.1%) of respondents reported having a school-aged child/children, and 17.7% of those



Those respondents were asked to compare the quality of education their children received since the pandemic began to prior to COVID-19. The majority (60%) indicated that the education their child received was either much worse (25%) or a bit worse (35%) than the education received prior to the pandemic. Only 6.3% of parents felt that the education their child received was a bit or much better and 28.3% felt that the education was about the same. This continues the pattern seen in 2020 when 55.9% of respondents thought that their child's education was a bit

worse or much worse. The increase occurred mostly among those responding that their child's education was much worse (19% to 25%).



Parents were asked about difficulties their child/children had experienced due to changes in their daily routines because of COVID-19 conditions. About 14.5% of parents reported no difficulties. More than half indicated that their child was not able to spend time with friends (56%) or had problems concentrating or focusing (51.7%). Other common reported difficulties included lack of motivation to complete schoolwork (44.9%), increased stress/worry (37.2%) and problems with technology/internet access (27.1%). Fewer parents reported that their child was unable to receive services for disabilities (10.6%) or not being able to access school lunches or other meals (4.8%). However, if we look just at the responses of the smaller subset of parents who indicated that their child had a disability, 40.9% reported problems with receiving services for disabilities.

Overall, the results in this section highlight the significant burdens the disruptions associated with the COVID-19 pandemic have placed on children and their educational progress.