

Division 12 – Furnishings

12.1. Window Treatments - General

- b. The use of plastic laminate countertops shall be limited and only as authorized by the ODU project manager.
  - c. Cultured Marble countertops are prohibited.
- 12.7. Entrance Floor Mats and Frames
- a. Recessed entry mats and frames are not desired by the university. Refer to division 9 or additional information.
- 12.8. Fixed Audience Seating
- a. In classrooms, all seats shall have articulating tablet arms. Provide at least 10 percent left hand tablet arms. Minimum size of tablet arm shall be sufficient to completely support a laptop computer. Provide integrated cup holders. Provide multiple locations and writing surfaces for wheelchairs within the fixed seating area as required by code.
    - i. Due to issues with a number of recent installations (2016) of tablet arms auditorium seating, ODU does not desire to use Irwin Seating for future projects.
  - b. Provide a mockup of the seats being installed prior to purchasing to confirm size and configuration is appropriate for students being served, especially true of athletic installations. Final approval of seat manufacturer and configuration is by the appropriate department Associate Director or dean or Associate Athletic Director for Operations.
- 12.9. Site Furnishings
- a. Contracted painting:  
  
ASCO – American Stripping Company  
865 West 39th Street  
P.O. Box 6088  
Norfolk, Virginia 23508
  - b. Decals:  
  
FASTSIGNS® of Norfolk  
[384@fastsigns.com](mailto:384@fastsigns.com)  
2000 Colonial Ave. Ste 11, Norfolk, Virginia 23517  
Phone: 757-274-3344 | Fax: 757-274-3347

Trash Receptacle

Color Sapphire Blue (West of Hampton Boulevard)

Color Black (East of Hampton Boulevard)

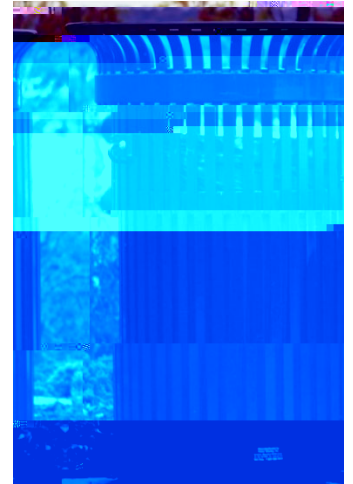
Basis of Design: Victor Stanley, Inc. #SD-42, Ironsites 32 gal. capacity, Tapered spun steel lid color RAL # 5003.

The side-door hinges have stainless-steel hinge pins and oil-impregnated bronze bushings.

Standard tapered formed lid. Latch. Bottom recessed pedestal.

All fabricated metal components are steel shotblasted, etched, phosphatized, preheated and electrostatically powder-coated with TGIC polyester powder coatings.

Provide a formed lid attached to the frame, a high-density plastic liner, and rubber-tipped leveling feet on the base.



Provide Victor Stanley Relay™ Sensor and Service available with rain bonnet lids. Keyed locking mechanism (US Patent 6,339,944 B1).

Provide custom white decals with crown and Old Dominion University.



Ash Urn

Color Sapphire Blue (West of Hampton Boulevard)

Color Black (East of Hampton Boulevard)

Ash Urns shall be located at least 25' from any building entrance.

Basis of Design: Victor Stanley, Inc. Ironsites model #S-20, Ironsites with inlaid stainless, steel ashtray and 6gl. Capacity – color RAL #5003 (sapphire blue).

Bench

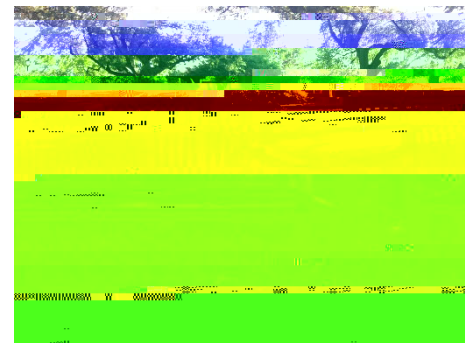
West of Hampton Boulevard

Basis of Design: Keystone Ridge, RE26 - Reading 6' bench with back,

Color: Sapphire. Laser cut logo piece fit into RE26, client logo "Old Dominion University."

½" Thick black nylon pads with/bolt-hole to attach all benches with 1 ½" wide feet. 4 Pads per set.

See [APPENDIX X - MEMORIAL BENCH AND TREE POLICY](#), for information related to memorial plaques on benches.

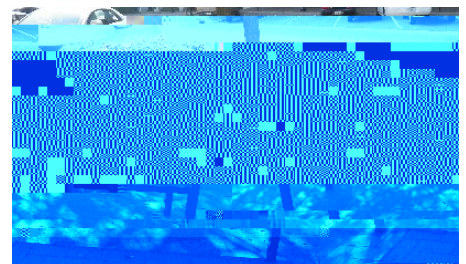


East of Hampton Boulevard

Basis of Design: Timberform Columbia Cascade, Renaissance MANOR

Arched Back Bench with Armrest, standard color (black) CASPAX – 7

powder coated steel # 2824 - 6

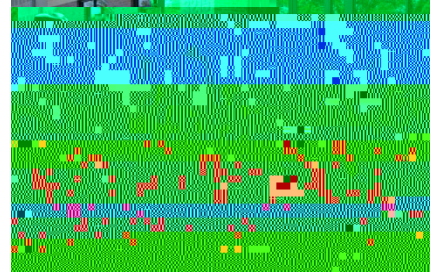


### Bike Racks

Basis of Design, Hoop Rack by Dero Bike Rack Co.

In-ground mount embedded into concrete base Refer to [APPENDIX AH – BIKE RACK DETAILS](#).

Provide a 1.5" schedule 40 (1.90" OD) bike hoop with high quality TGIC powder-coated finish, color Black. Prepare rack for painting with hard sandblasting. An epoxy primer is electrostatically applied. A final TGIC, UV resistant polyester powder coat is applied. Final coating mil thickness shall be no less than 6 mils.



Bike racks shall be considered and planned as part of the initial site planning efforts. Location of the racks should be placed in close proximity to offsite bike circulation paths and on the path leading to building entrances, balancing between aesthetic appearance and convenience. The goal is to avoid bicycles being locked to light poles, fencing, etc. because the racks are inconvenient. The placement of bike racks will be reviewed with the ODU Grounds Manager.

Mount racks with clearances as recommended by the manufacturer. Provide dimensioned layouts at all locations showing position of rack and bicycles in relation to all adjacent walkways.

### Exterior Tables and Chairs

(Reserved)

12.10. Interior Furnishings

- a. ODU, as a state institution must purchase furniture from Virginia Correctional Enterprises (VCE) and may only purchase from VASCUPP or other state contract vendors with an appropriate VCE waiver. *Different Procurement rules may apply for Real Estate Foundation Projects.* <https://www.govce.net/>
- b. The A/E shall layout furniture and equipment as part of basic services design to demonstrate functional use of spaces and as a placeholder for the final furnishings selections. The A/E shall use furniture templates that are realistic and do not make the space appear larger that they are by using furniture templates that are too small to be functional. These plans will be used as the basis for locating receptacles, switches, data outlets, lighting, etc. during the remainder of the design process. In residence halls, the A/E shall obtain the actual furniture types and sizes from the Office of Residence Life and shall use these in defining room layouts.
- c. Early in the programming and planning phase of a major renovation or new construction project, the method to be used for delivery of interior design services should be established. The A/E should come to an agreement with the ODU Project Manager and Director of Design and Construction to determine responsibility for FFE: whether design is to be done under the A/E's contract, whether a separate Interior Design Professional will be contracted directly with the Owner, or whether The Department of Design and Construction will assume responsibility for the design and purchasing of furnishings under another arrangement.
- d. When developing the scope for FFE, consideriorvic0oren -5.1esbnCare and